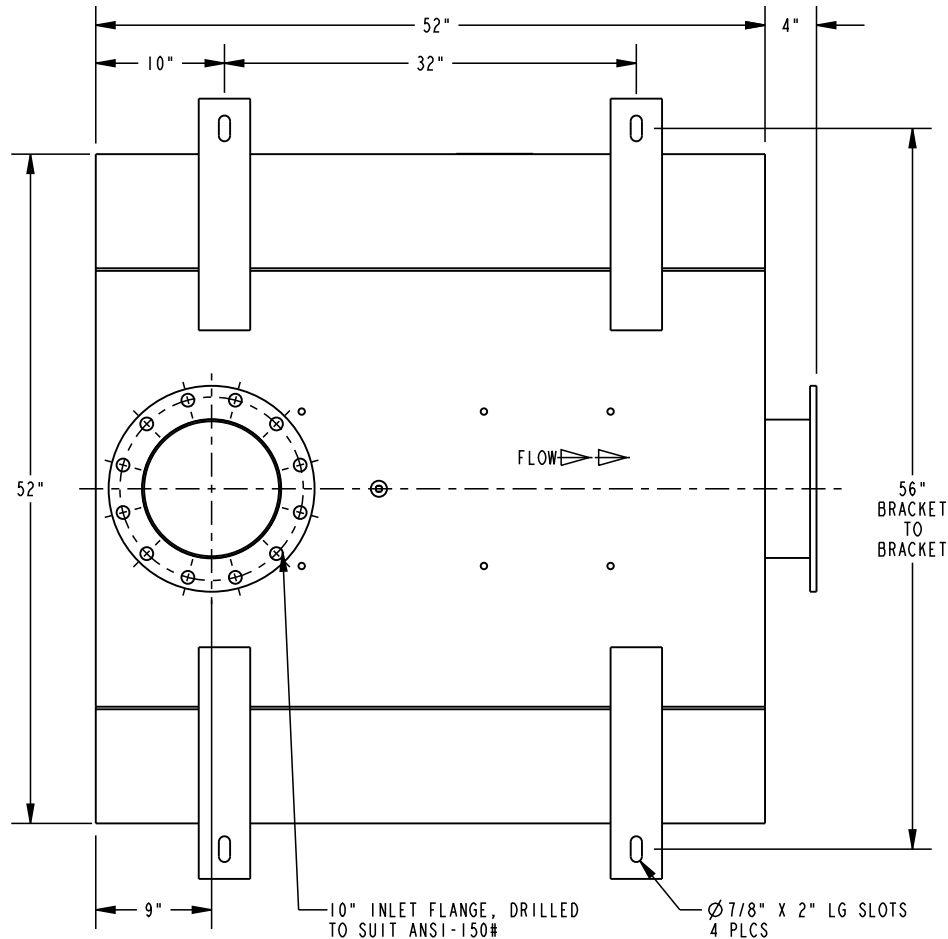
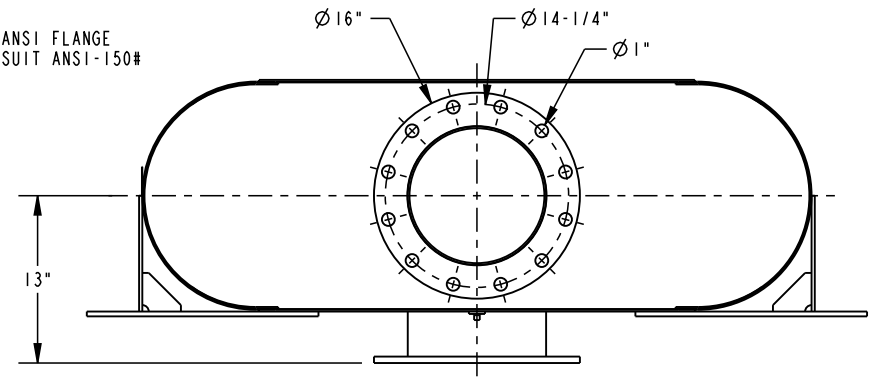


10" OUTLET ANSI FLANGE
DRILLED TO SUIT ANSI-150#

10-3/4" OD



FLOW →

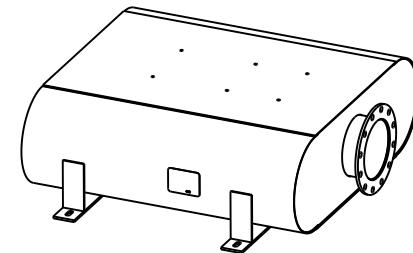
56" BRACKET TO BRACKET

10" INLET FLANGE, DRILLED TO SUIT ANSI-150#

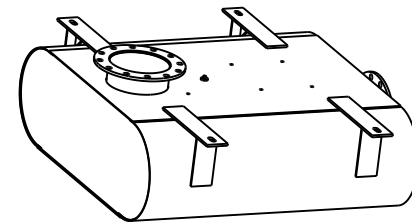
Ø 7/8" X 2" LG SLOTS
4 PLCS

NOTES:


1. MATERIAL CARBON STEEL.
2. SILENCER IS DESIGNED TO SUPPORT OWN WEIGHT ONLY.
3. STANDARD MAXIM CONSTRUCTION TOLERANCE APPLY ±1/4".
4. ALL WELDED CONSTRUCTION.
5. DRAWING SUBJECT TO CHANGE WITHOUT NOTICE.



TOP VIEW
SCALE 0.030



BOTTOM VIEW
SCALE 0.030

XX	XX	MM/DD/YY	XXXXXXXXXXXXXX
REV. NO.	REV. BY	DATE	DESCRIPTION
ALL DIMENSIONS IN INCHES UNLESS OTHERWISE SPECIFIED.			DRAWING TYPE: SALES
TOLERANCES APPLY ON CRITICAL DIMENSION(S) AS SHOWN BELOW: ±1/4" IMP FRAC; ±0.25 IMP DEC ±0.35 MM METRIC; ±2° ANGULAR			
DRAWN BY: CM			DATE: 10/2/17
APPROVED BY:			DATE:
TITLE: SILENCER, ENCLOSURE, THIN LINE, CRITICAL GRADE			10635 Brighton Lane Stafford, TX, 77477 PH (832) 554-0980 FX (832) 554-0990 www.maximsilencers.com
REF #: 03		EST. WEIGHT: 719 LBS	MAXIM MODEL NO.: MR32-10C1-SB
DRAWING NO.: STANDARD		REV: 00	
THIRD ANGLE PROJECTION		ORDER:	SHIP DATE:
PROJECT/SALES ORDER NO.:		EXTERNAL FINISH: HT BLACK PAINT	
SHEET: 1 OF 1			