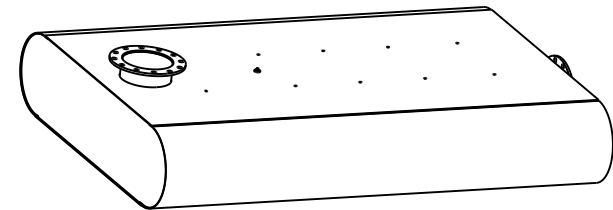


SCALE 0.025



SCALE 0.025

NOTES:

1. MATERIAL CARBON STEEL.
2. SILENCER IS DESIGNED TO SUPPORT OWN WEIGHT ONLY.
3. STANDARD MAXIM CONSTRUCTION TOLERANCE APPLY  $\pm 1/4"$ .
4. ALL WELDED CONSTRUCTION.
5. DRAWING SUBJECT TO CHANGE WITHOUT NOTICE.

REV. NO.	REV. BY	MM/DD/YY	DATE	DESCRIPTION
XX	XX	MM/DD/YY	DATE	XXXXXXXXXXXXXXXX
ALL DIMENSIONS IN INCHES UNLESS OTHERWISE SPECIFIED. TOLERANCES APPLY ON CRITICAL DIMENSION(S) AS SHOWN BELOW: $\pm 1/4"$ IMP FRAC; $\pm 0.25$ IMP DEC $\pm 0.35$ MM METRIC; $\pm 2^\circ$ ANGULAR				DRAWING TYPE: SALES DRAWN BY: AS DATE: 10/5/17
<b>[DIM] HOLD - CRITICAL DIMENSION</b>				<b>MAXIM SILENCERS</b> 10635 Brighton Lane Stafford, TX, 77477 PH (832) 554-0980 FX (832) 554-0990 www.maximsilencers.com
THE INFORMATION HEREIN IS THE PROPERTY OF MAXIM SILENCERS. TRANSMITTAL TO OTHERS OR USE EXCEPT THAT FOR WHICH IT IS PROVIDED IS STRICTLY PROHIBITED. DO NOT SCALE DRAWING.				APPROVED BY: _____ DATE: _____ TITLE: SILENCER, ENCLOSURE, THIN LINE, EXTREME GRADE
REF #:		EST. WEIGHT:		MAXIM MODEL NO.:
03		1425 LBS		MR62-10C1
THIRD ANGLE PROJECTION		ORDER:		DRAWING NO.:
		SHIP DATE:		STANDARD
		PROJECT/SALES ORDER NO.:		REV: 00
		EXTERNAL FINISH:		SHEET: 1 OF 1
		HT BLACK PAINT		