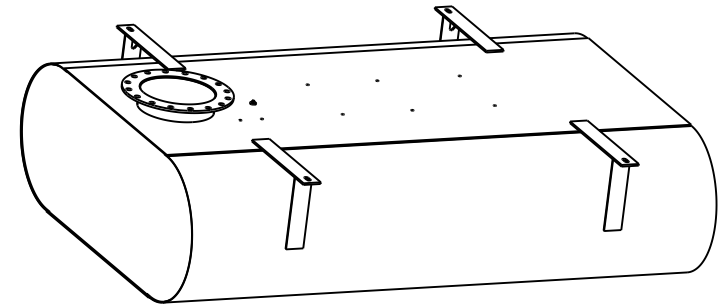


TOP VIEW  
SCALE 0.025



BOTTOM VIEW  
SCALE 0.025

NOTES:

1. MATERIAL CARBON STEEL.
2. SILENCER IS DESIGNED TO SUPPORT OWN WEIGHT ONLY.
3. STANDARD MAXIM CONSTRUCTION TOLERANCE APPLY  $\pm 1/4"$ .
4. ALL WELDED CONSTRUCTION.
5. DRAWING SUBJECT TO CHANGE WITHOUT NOTICE.

REV. NO.	REV. BY	MM/DD/YY	DESCRIPTION
XX	XX	MM/DD/YY	XXXXXXXXXXXXXX
ALL DIMENSIONS IN INCHES UNLESS OTHERWISE SPECIFIED. TOLERANCES APPLY ON CRITICAL DIMENSION(S) AS SHOWN BELOW: $\pm 1/4"$ IMP FRACTION; $\pm 0.25$ IMP DEC; $\pm 0.35$ MM METRIC; $\pm 2^\circ$ ANGULAR			
DRAWING TYPE:		SALES	
DRAWN BY:		DATE:	
AS		10/6/17	
APPROVED BY:		DATE:	
REF #:		EST. WEIGHT:	
03		2260 LBS	
ORDER:		SHIP DATE:	
TITLE:		SILENCER, ENCLOSURE, THIN LINE, EXTREME GRADE	
MAXIM MODEL NO.:		DRAWING NO.:	
MR62-16C1-SB		STANDARD	
PROJECT/SALES ORDER NO.:		EXTERNAL FINISH:	
		HT BLACK PAINT	
REV:		SHEET:	
00		1 OF 1	



10635 Brighton Lane  
Stafford, TX 77477  
PH (832) 554-0980  
FX (832) 554-0990  
www.maximsilencers.com

