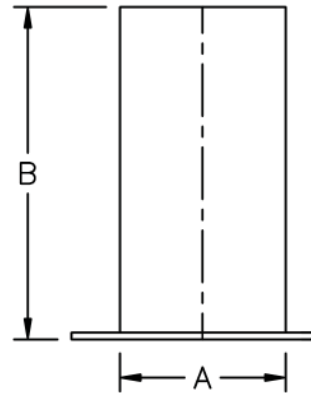


M-25 OUTLET EXTENSIONS

Assembled Tubing

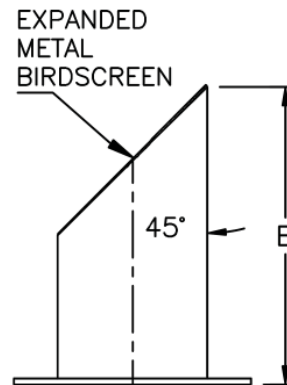
Straight Tube (Stacks), Flanged One End

Part Number	A (OD)	B
M-25-400-1	4	12
M-25-450-1	4.5	12
M-25-500-1	5	15
M-25-600-1	6	18
M-25-800-1	8	18
M-25-1000-1	10	20
M-25-1200-1	12	24
M-25-1400-1	14	28
M-25-1600-1	16	32
M-25-1800-1	18	36
M-25-2000-1	20	40
M-25-2200-1	22	44
M-25-2400-1	24	48
M-25-2600-1	26	48
M-25-2800-1	28	48
M-25-3000-1	30	48



Straight Tube, 45° Cut with Bird Screen

Part Number	A (OD)	B
M-25-400-2	4	12
M-25-450-2	4.5	12
M-25-500-2	5	15
M-25-600-2	6	18
M-25-800-2	8	18
M-25-1000-2	10	20
M-25-1200-2	12	24
M-25-1400-2	14	28
M-25-1600-2	16	32
M-25-1800-2	18	36
M-25-2000-2	20	40
M-25-2200-2	22	44
M-25-2400-2	24	48
M-25-2600-2	26	48
M-25-2800-2	28	48
M-25-3000-2	30	48



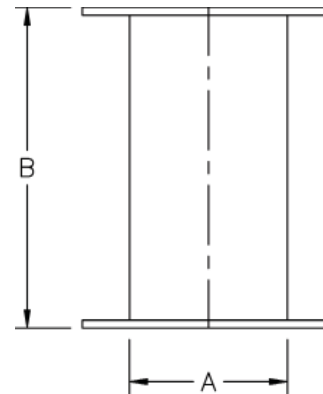
All dimensions are in inches. All weights are in pounds. Weights are approximate. Larger sizes available. Available in stainless steel. Connection(s) are ANSI steel plate flanges unless otherwise specified.

M-25 to M-26 OUTLET EXTENSIONS

Assembled Tubing and 90° Elbows

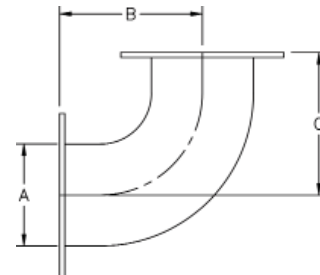
Straight Tube, Flanged Both Ends

Part Number	Length	A (OD)	B	WT
M-25-11-400-12	12	4	12	16
M-25-11-450-12	12	4.5	12	16
M-25-11-500-15	15	5	15	23
M-25-11-600-18	18	6	18	25
M-25-11-800-18	18	8	18	38
M-25-11-1000-20	20	10	20	50
M-25-11-1200-24	24	12	24	72
M-25-11-1400-28	28	14	28	87
M-25-11-1600-32	32	16	32	108
M-25-11-1800-36	36	18	36	134
M-25-11-2000-40	40	20	40	166
M-25-11-2200-48	48	22	48	201
M-25-11-2400-48	48	24	48	226
M-25-11-2600-48	48	26	48	247
M-25-11-2800-48	48	28	48	268
M-25-11-3000-48	48	30	48	436



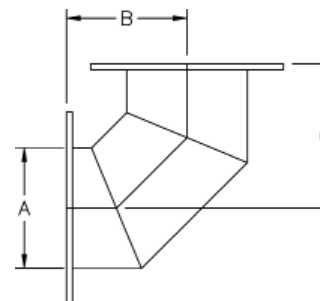
90° Elbow (Short Radius), Tube, Flanged Both Ends

Part Number	A	B	C	WT
M-26-400	4	7.5	7.5	16
M-26-500	5	9	9	20
M-26-600	6	11	11	24
M-26-800	8	12	12	39
M-26-1000	10	14	14	53
M-26-1200	12	16	16	75



90° Elbow (Short Radius), Mitered, Flanged Both Ends

Part Number	A	B	C	WT
M-26-M-800	8	8	8	34
M-26-M-1000	10	10	10	47
M-26-M-1200	12	12	12	67
M-26-M-1400	14	14	14	80
M-26-M-1600	16	16	16	111
M-26-M-1800	18	18	18	124
M-26-M-2000	20	20	20	150
M-26-M-2200	22	22	22	171
M-26-M-2400	24	24	24	203
M-26-M-2600	26	26	26	232
M-26-M-2800	28	28	28	262
M-26-M-3000	30	30	30	447



All dimensions are in inches. All weights are in pounds. Weights are approximate. Larger sizes available. Available in stainless steel. Connection(s) are ANSI steel plate flanges unless otherwise specified.

