

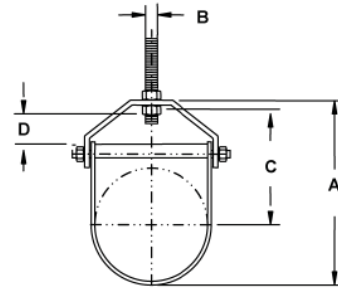
M-27 PIPE HANGERS

Pipe Hangers

Pipe Hangers, Clevis

Part Number	Pipe Size	A	B	C	D	Bolt Size
M-27-1-150	2	4.5	0.38	3.0	1.63	0.25
M-27-1-200	2	4.63	0.38	2.94	1.31	0.25
M-27-1-250	3	6	0.50	3.88	1.75	0.38
M-27-1-300	3	6.69	0.50	4.25	1.75	0.38
M-27-1-350	4	7.19	0.50	4.56	1.75	0.38
M-27-1-400	4	8.19	0.63	5.06	2.06	0.38
M-27-1-500	5	9.5	0.63	5.88	2.06	0.50
M-27-1-600	6	10.69	0.75	6.31	2.25	0.50
M-27-1-800	8	13.75	0.88	8.38	2.50	0.63
M-27-1-1000	10	16.44	0.88	9.88	2.50	0.75
M-27-1-1200	12	18.63	0.88	11.06	2.94	0.75
M-27-1-1400	14	20.88	1.0	12.44	3.19	0.88
M-27-1-1600	16	23.31	1.0	13.88	3.19	0.88
M-27-1-1800	18	25.25	1.0	14.69	2.94	0.88
M-27-1-2000	20	29.31	1.25	17.38	4.19	1.00
M-27-1-2400	24	33.19	1.5	19.63	3.75	1.00

Heavy plate steel construction.



Pipe Hangers, Pear Shaped

Part Number	Pipe Size	A	B	C	D
M-27-2-150	1.5	0.38	2.88	2.0	1.0
M-27-2-200	2	0.38	3.31	2.44	1.25
M-27-2-250	2.5	0.50	3.94	2.94	1.5
M-27-2-300	3	0.50	4.25	3.25	1.5
M-27-2-400	4	0.63	5.75	4.25	2.0
M-27-2-500	5	0.63	6.31	4.81	2.06
M-27-2-600	6	0.75	6.88	5.38	0.06
M-27-2-800	8	0.88	8.56	6.94	2.63

Adjustable.

