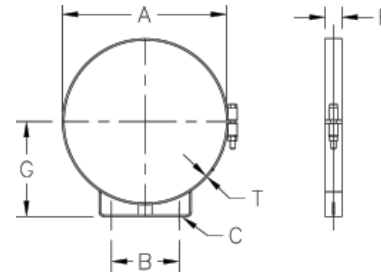


M-29 BRACKETS

Round Mounting Brackets

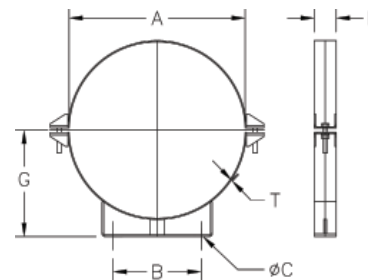
Single Piece Construction, Carbon Steel

Part Number	A	B	C	F	G	T	WT
M-29-400	4.00	2.25	0.38	1.00	2.62	0.13	0.50
M-29-450	4.50	2.50	0.38	1.00	2.86	0.13	0.60
M-29-500	5.00	3.50	0.38	1.00	3.12	0.13	0.70
M-29-550	5.50	3.00	0.38	1.00	3.33	0.13	0.70
M-29-600	6.00	3.00	0.38	1.00	3.56	0.13	0.80
M-29-650	6.50	3.75	0.38	1.00	3.83	0.13	0.80
M-29-700	7.00	4.50	0.38	1.00	4.06	0.13	1.00
M-29-800	8.00	4.25	0.38	1.25	5.00	0.13	1.50
M-29-850	8.50	4.25	0.38	1.25	5.25	0.13	1.50
M-29-900	9.00	4.50	0.38	1.25	5.50	0.13	1.70
M-29-1000	10.00	5.00	0.38	1.25	6.00	0.13	1.70
M-29-1100	11.00	5.00	0.38	1.25	6.50	0.13	1.80
M-29-1200	12.00	5.00	0.38	1.25	7.00	0.13	2.00
M-29-1400	14.00	6.00	0.41	1.25	8.12	0.13	3.00



Two-Piece Split Design, Carbon Steel

Part Number	A	B	C	F	G	T	WT
M-29-1600	16	8	0.50	2.0	8.9	0.134	5.5
M-29-1800	18	9	0.50	2.0	11.12	0.134	6
M-29-2000	20	10	0.50	2.5	12.06	0.134	9.5
M-29-2200	22	11	0.50	2.5	13.63	0.134	10.5
M-29-2400	24	12	0.63	2.5	14.56	0.134	11.5
M-29-2600	26	13	0.63	3.0	15.44	0.190	17.5
M-29-2800	28	14	0.63	3.0	16.31	0.190	24
M-29-3000	30	15	0.63	4.0	17.25	0.190	27
M-29-3600	36	18	0.63	4.0	20.12	0.190	33
M-29-4000	40	20	0.75	4.0	22.38	0.190	40
M-29-4200	42	21	0.75	4.0	23.38	0.190	44
M-29-4500	45	22.5	1.0	4.0	25.19	0.190	50
M-29-4800	48	24	1.0	4.0	26.50	0.250	63
M-29-5000	50	25	1.0	4.0	29.00	0.250	65
M-28-5400	54	27	1.0	4.0	30.50	0.250	67
M-29-6000	60	30	1.0	6.0	34.50	0.250	118
M-29-6200	62	32.0	1.0	6.0	35.00	0.250	120



M-29 Brackets are NOT be used for vertical installations, we recommend the installation of WELDED SERIES BRACKETS (found in Silencer Catalog)

M-29 brackets are NOT recommended to hang a pipe or silencer.

All dimensions are in inches. All weights are in pounds. Weights are approximate. Larger sizes available. Available in stainless steel.

