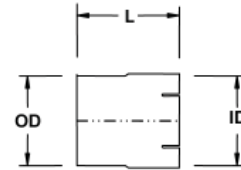


# M-49 to M-51 TUBE FITTINGS

## Couplers and Reducer / Expanders

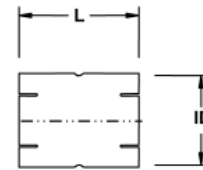
### Cuffed One End, Flex Hose Couplers / Stacks

Part Number	Tube Size	L	WT	Part Number	Tube Size	L	WT
M-49-200	2	4.5	0.46	M-49-500	5	6	1.58
M-49-250	2.5	4.5	0.57	M-49-600	6	6	1.89
M-49-300	3	5	0.77	M-49-800	8	8	2.33
M-49-350	3.5	5.5	1.00	M-49-1000	10	8	7
M-49-400	4	6	1.25	M-49-1200	12	10	10



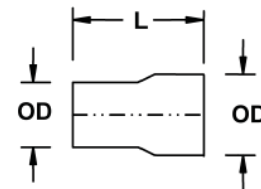
### Cuffed Both Ends, Straight Tube Couplers

Part Number	Tube Size	L	WT	Part Number	Tube Size	L	WT
M-50-200	2	4.5	0.47	M-50-500	5	6.5	1.69
M-50-250	2.5	4.5	0.58	M-50-600	6	6.5	2.02
M-50-300	3	5	0.77	M-50-800	8	8.5	4
M-50-350	3.5	5.5	1.01	M-50-1000	10	8.5	5
M-50-400	4	6.5	1.36	M-50-1200	12	8.5	7



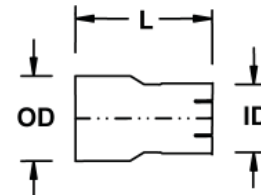
### Reducer / Expander, Style 1

Part Number	Tube Size	L	WT	Part Number	Tube Size	L	WT
M-51-2-225-1	2 X 2.25	6	0.65	M-51-35-450-1	3.5 X 4.5	7	1.45
M-51-2-250-1	2 X 2.5	6	0.70	M-51-35-500-1	3.5 X 5	8	1.68
M-51-25-300-1	2.5 X 3	6	0.86	M-51-4-450-1	4 X 4.5	6.5	1.41
M-51-3-350-1	3 X 3.5	6	1.05	M-51-4-500-1	4 X 5	8	1.88
M-51-3-400-1	3 X 4	6.5	1.17	M-51-5-550-1	5 X 5.5	6.5	1.79
M-51-35-400-1	3.5 X 4	6	1.17	M-51-5-600-1	5 X 6	8	2.29



### Reducer / Expander, Style 2

Part Number	Tube Size	L	WT	Part Number	Tube Size	L	WT
M-51-2-225-2	2 X 2.25	6	0.67	M-51-35-450-2	3.5 X 4.5	7	1.49
M-51-2-250-2	2 X 2.5	6	0.71	M-51-35-500-2	3.5 X 5	8	1.64
M-51-25-300-2	2.5 X 3	6	0.85	M-51-4-450-2	4 X 4.5	6.5	1.50
M-51-3-350-2	3 X 3.5	6	1.00	M-51-4-500-2	4 X 5	8	1.88
M-51-3-400-2	3 X 4	6.5	1.28	M-51-5-550-2	5 X 5.5	6.5	1.90
M-51-35-400-2	3.5 X 4	6	1.17	M-51-5-600-2	5 X 6	8	2.46



All dimensions are in inches. All weights are in pounds. Weights are approximate. Larger sizes available. Available in stainless steel.

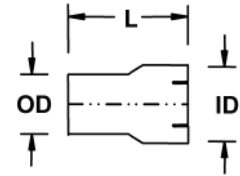


# M-51 to M-52 TUBE FITTINGS

## Reducer / Expanders and Stack Breakers

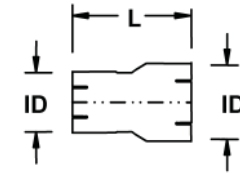
### Reducer / Expander, Style 3

Part Number	Tube Size	L	WT	Part Number	Tube Size	L	WT
M-51-2-225-3	2 X 2.25	6	0.66	M-51-35-450-3	3.5 X 4.5	7	1.42
M-51-2-250-3	2 X 2.5	6	0.69	M-51-35-500-3	3.5 X 5	8	1.79
M-51-25-300-3	2.5 X 3	6	0.84	M-51-4-450-3	4 X 4.5	6.5	1.46
M-51-3-350-3	3 X 3.5	6	10.9	M-51-4-500-3	4 X 5	8	1.93
M-51-3-400-3	3 X 4	6.5	1.18	M-51-5-550-3	5 X 5.5	6.5	1.82
M-51-35-400-3	3.5 X 4	6	1.18	M-51-5-600-3	5 X 6	8	2.69



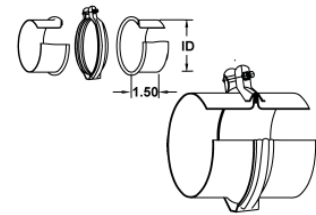
### Reducer / Expander, Style 4

Part Number	Tube Size	L	WT	Part Number	Tube Size	L	WT
M-51-2-225-4	2 X 2.25	6	0.66	M-51-35-450-4	3.5 X 4.5	7	1.46
M-51-2-250-4	2 X 2.5	6	0.72	M-51-35-500-4	3.5 X 5	8	1.71
M-51-25-300-4	2.5 X 3	6	0.88	M-51-4-450-4	4 X 4.5	6.5	1.48
M-51-3-350-4	3 X 3.5	6	1.03	M-51-4-500-4	4 X 5	8	1.89
M-51-3-400-4	3 X 4	7	1.18	M-51-5-550-4	5 X 5.5	6.5	1.79
M-51-35-400-4	3.5 X 4	6	1.19	M-51-5-600-4	5 X 6	8	2.12



### Stack Breaker, includes 2 flanges and a clamp

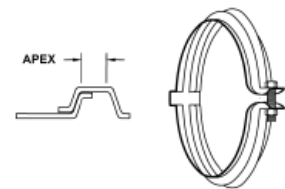
Flange		Clamp		Set		
Part Number	WT	Part Number	WT	Part Number	WT	ID
M-52-200	0.23	M-52C-200	0.17	M-52E-200	0.64	2
M-52-250	0.29	M-52C-250	0.20	M-52E-250	0.77	2.5
M-52-300	0.34	M-52C-300	0.22	M-52E-300	0.90	3
M-52-350	0.40	M-52C-350	0.25	M-52E-350	1.0	3.5
M-52-400	0.45	M-52C-400	0.28	M-52E-400	1.2	4
M-52-500	0.56	M-52C-500	0.33	M-52E-500	1.5	5
M-52-600	0.66	M-52C-600	0.39	M-52E-600	1.7	6



Stack breakers are leak tight. No gasket required.

### V-Clamp With Hinge, Open Ear Style

Part Number	Tube Size	Apex	WT	Part Number	Tube Size	APEX	WT
M-52C-200	2.0	0.207	0.17	M-52C-450	4.5	0.207	0.31
M-52C-250	2.5	0.207	0.20	M-52C-500	5	0.207	0.33
M-52C-300	3.0	0.207	0.22	M-52C-550	5.5	0.207	0.36
M-52C-350	3.5	0.207	0.25	M-52C-600	6	0.207	0.39
M-52C-400	4.0	0.207	0.28				



All dimensions are in inches. All weights are in pounds. Weights are approximate. Larger sizes available. Available in stainless steel.