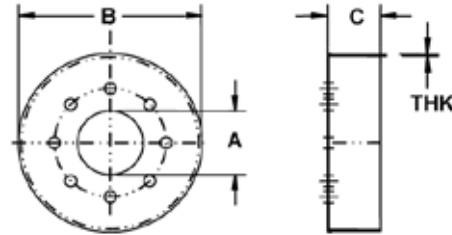


# M-80 to M-82 RAIN GUARDS to DRAIN COCKS

## Rain Guards and Drain Cocks

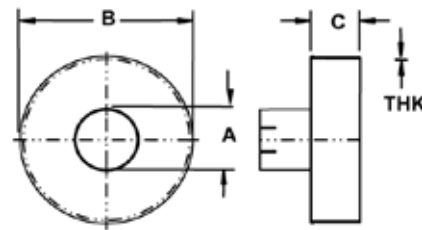
### Rain Guards, ANSI Flange Style

Part Number	A	B	C	THK
M-80-400	4	15	4	0.083
M-80-500	5	15	4	0.083
M-80-600	6	15	4	0.083
M-80-800	8	18	4	0.083
M-80-1000	10	20	4	0.083
M-80-1200	12	24	4	0.083
M-80-1400	14	24	4	0.083



### Rain Guards, ID Cuff Style

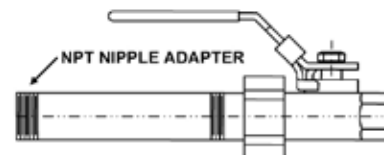
Part Number	A	B	C	THK
M-81-400	4	15	4	0.083
M-81-450	4.5	15	4	0.083
M-81-500	5	15	4	0.083
M-81-556	5.56	15	4	0.083
M-81-600	6	15	4	0.083
M-81-663	6.63	15	4	0.083
M-81-800	8	18	4	0.083
M-81-863	8.63	18	4	0.083
M-81-1000	10	20	4	0.083
M-81-1075	10.75	20	4	0.083
M-81-1200	12	24	4	0.083
M-81-1275	12.75	24	4	0.083
M-81-1400	14	24	4	0.083



### Drain Cocks

Part Number	Port	Pipe Size
M-82-0500	Full	0.50
M-82-0750	Standard	0.75
M-82-0100	Standard	1.00
M-82-0150	Standard	1.50

Bronze ball valve (union x NPT female).  
 Ball is chrome plated brass.  
 Latch lock handle allows padlock.  
 Includes 4" long NPT male nipple adapter.



• All dimensions are in inches.