

### Silencer Specification

# MAXIM

• SILENCERS •

### OVERVIEW

The M2 is engineered for residential and light industrial areas where background noise is relatively high and constant. The need for higher degrees of silencing should be minimal, keeps engine exhaust noise within existing levels.

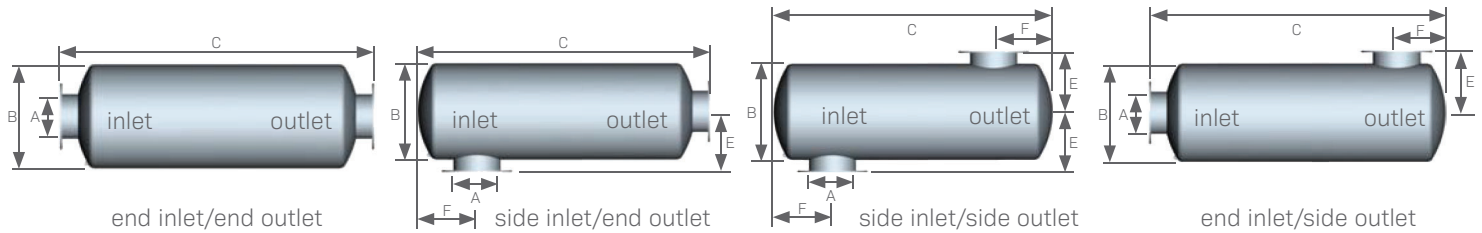
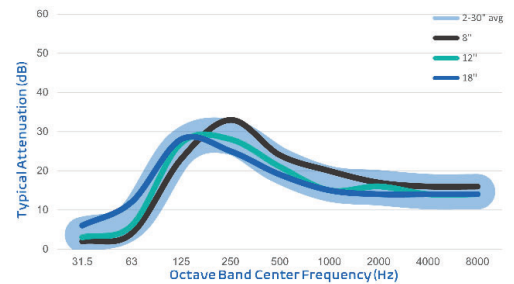
Typical application: Internal combustion engine exhausts in neighborhoods having high traffic or light industry with relatively constant background noise. Residents in these areas are typically accustomed to the noise or make some efforts to shield themselves from the ever present background noise.

### FEATURES

- Advanced acoustical design
- Heavy duty, all welded construction and long service life
- Easily installed in any position
- High heat silicone black finish
- Connections: Sizes 3.5 and under MNPT, 4 and up ANSI pattern flanged
- Two chambers
- Drain connection

### OPTIONS / ACCESSORIES

- Explosion relief cover
- Flexible connectors
- Companion flanges
- Cleanout openings
- Custom inlet/outlet size, location and multiple orientations available
- Horizontal or vertical support arrangements
- Aluminized steel, Stainless Steel 304 or 316 construction available
- Special paints and finishes available
- Complete range of exhaust accessories



### PRODUCT SPECS

Model-Size	A (size)	B (dia)	End In/End Out		Side In/End Out		Side In/Side Out		End In/Side Out		Est Wt
			C (OAL)	C (OAL)	C (OAL)	C (OAL)	C (OAL)	C (OAL)	E	F	
M2-02.0	2.0	8	24.0	21.0	18.0	21.0	7.0	4.0	34		
M2-02.5	2.5	10	24.0	21.0	18.0	21.0	8.0	4.5	38		
M2-03.0	3.0	12	26.0	23.0	20.0	23.0	9.0	5.0	45		
M2-03.5	3.5	14	30.0	27.0	24.0	27.0	10.0	5.5	56		
M2-04.0	4.0	14	36.0	32.0	28.0	32.0	11.0	6.0	60		
M2-05.0	5.0	16	43.0	39.0	35.0	39.0	12.0	7.0	80		
M2-06.0	6.0	18	49.0	45.0	41.0	45.0	13.0	7.5	102		
M2-08.0	8.0	22	59.0	55.0	51.0	55.0	15.0	9.5	170		
M2-10.0	10.0	26	64.0	60.0	56.0	60.0	17.0	11.5	270		
M2-12.0	12.0	30	77.0	73.0	69.0	73.0	19.0	13.0	415		
M2-14.0	14.0	36	83.0	78.0	73.0	78.0	23.0	15.5	550		
M2-16.0	16.0	40	90.0	85.0	80.0	85.0	25.0	16.5	784		
M2-18.0	18.0	45	96.0	91.0	86.0	91.0	27.5	18.0	931		
M2-20.0	20.0	50	109.0	104.0	99.0	104.0	30.0	20.5	1,357		
M2-22.0	22.0	54	119.0	114.0	109.0	114.0	32.0	22.5	1,764		
M2-24.0	24.0	60	125.0	120.0	115.0	120.0	35.0	24.0	2,105		
M2-26.0	26.0	64	140.0	135.0	130.0	135.0	37.0	25.5	2,477		
M2-28.0	28.0	68	155.0	150.0	145.0	150.0	39.0	26.5	2,856		
M2-30.0	30.0	72	166.0	161.0	156.0	161.0	41.0	28.0	3,259		

- All dimensions are in inches. All weights are in pounds. Weights are approximate.
- Listed sound data is based on typical performance and should not be considered absolute.
- See nomenclature guide for additional information on part number creation.