

Silencer Specification



OVERVIEW

The M3 is engineered for residential areas where background noise is present, but not objectionable. In these areas, installation of an M3 on an engine exhaust is intended to bring the noise level down to match the ambient noise levels.

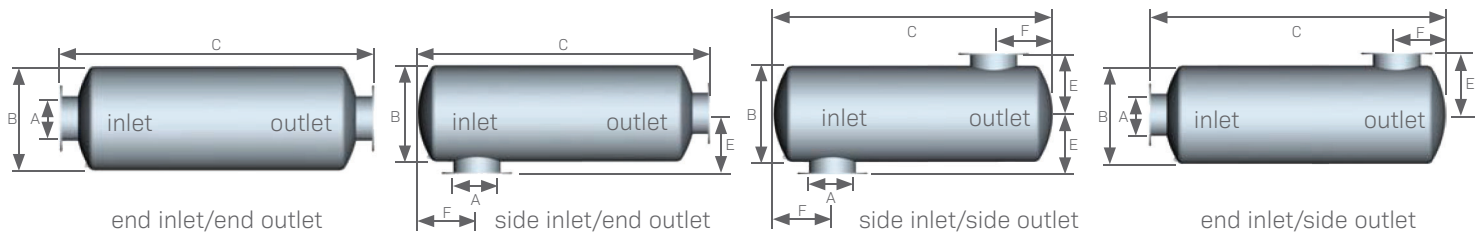
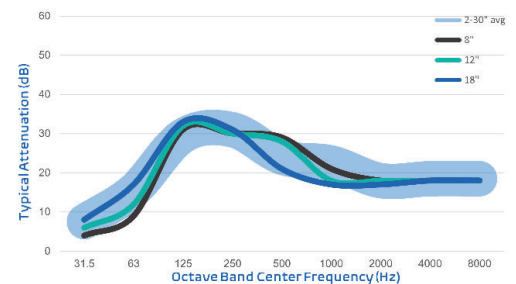
Typical application: Internal combustion engine exhausts in quieter residential area off main traffic areas and away from constant noise sources.

FEATURES

- Advanced acoustical design
- Heavy duty, all welded construction and long service life
- Easily installed in any position
- High heat silicone black finish
- Connections: Sizes 3.5 and under MNPT, 4 and up ANSI pattern flanged
- Two chambers
- Drain connection

OPTIONS / ACCESSORIES

- Explosion relief cover
- Flexible connectors
- Companion flanges
- Cleanout openings
- Custom inlet/outlet size, location and multiple orientations available
- Horizontal or vertical support arrangements
- Aluminized steel, Stainless Steel 304 or 316 construction available
- Special paints and finishes available
- Complete range of exhaust accessories



PRODUCT SPECS

Model-Size	A (size)	B (dia)	End In/End Out		Side In/End Out	Side In/Side Out	End In/Side Out	E	F	Est Wt
			C (OAL)	C (OAL)	C (OAL)	C (OAL)				
M3-02.0	2.0	8	34.0	31.0	28.0	31.0	7.0	4.5	24	
M3-02.5	2.5	10	34.0	31.0	28.0	31.0	8.0	5.0	33	
M3-03.0	3.0	12	38.0	35.0	32.0	35.0	9.0	5.5	50	
M3-03.5	3.5	14	42.0	39.0	36.0	39.0	10.0	6.0	65	
M3-04.0	4.0	14	48.0	44.0	40.0	44.0	11.0	6.0	75	
M3-05.0	5.0	16	57.0	53.0	49.0	53.0	12.0	7.0	100	
M3-06.0	6.0	18	63.0	59.0	55.0	59.0	13.0	8.0	126	
M3-08.0	8.0	22	74.0	70.0	66.0	70.0	15.0	9.5	203	
M3-10.0	10.0	26	87.0	83.0	79.0	83.0	17.0	11.5	352	
M3-12.0	12.0	30	102.0	98.0	94.0	98.0	19.0	13.0	519	
M3-14.0	14.0	36	109.0	104.0	99.0	104.0	23.0	15.5	674	
M3-16.0	16.0	40	119.0	114.0	109.0	114.0	25.0	16.5	973	
M3-18.0	18.0	45	127.0	122.0	117.0	122.0	27.5	18.0	1,165	
M3-20.0	20.0	50	137.0	132.0	127.0	132.0	30.0	20.5	1,656	
M3-22.0	22.0	54	149.0	144.0	139.0	144.0	32.0	22.5	2,107	
M3-24.0	24.0	60	162.0	157.0	152.0	157.0	35.0	24.0	2,566	
M3-26.0	26.0	64	183.0	178.0	173.0	178.0	37.0	25.5	3,031	
M3-28.0	28.0	68	200.0	195.0	190.0	195.0	39.0	26.5	3,468	
M3-30.0	30.0	72	216.0	211.0	206.0	211.0	41.0	28.0	3,992	

- All dimensions are in inches. All weights are in pounds. Weights are approximate.
- Listed sound data is based on typical performance and should not be considered absolute.
- See nomenclature guide for additional information on part number creation.