

Silencer Specification

MAXIM

• SILENCERS •

OVERVIEW

The M4 is engineered for quiet residential areas where background noise is relatively low, and super critical grade silencing is required.

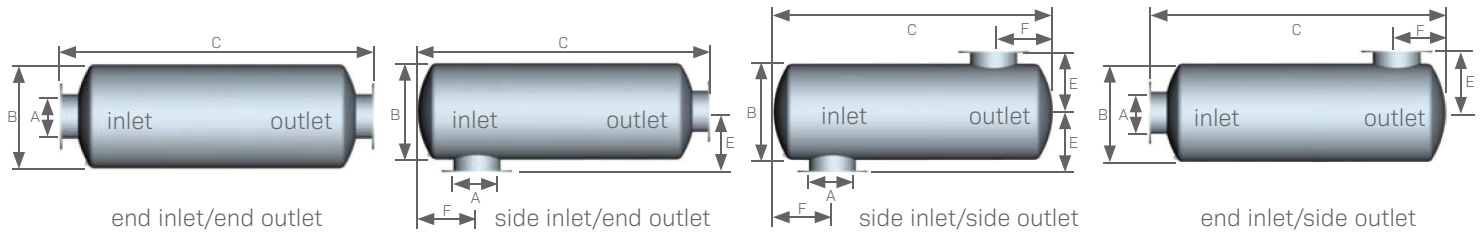
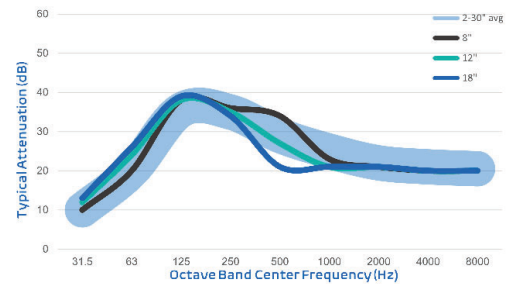
Typical application: Internal combustion engine exhausts in truly quiet residential areas where ambient noise levels are very low and the sound of birds singing and the soft hum of air conditioning units may be the noticeable noise features.

FEATURES

- Advanced acoustical design
- Heavy duty, all welded construction and long service life
- Easily installed in any position
- High heat silicone black finish
- Connections: Sizes 3.5 and under MNPT, 4 and up ANSI pattern flanged
- Two chambers
- Drain connection

OPTIONS / ACCESSORIES

- Explosion relief cover
- Flexible connectors
- Companion flanges
- Cleanout openings
- Custom inlet/outlet size, location and multiple orientations available
- Horizontal or vertical support arrangements
- Aluminized steel, Stainless Steel 304 or 316 construction available
- Special paints and finishes available
- Complete range of exhaust accessories



PRODUCT SPECS

Model-Size	A (size)	B (dia)	End In/End Out C (OAL)	Side In/End Out C (OAL)	Side In/Side Out C (OAL)	End In/Side Out C (OAL)	E	F	Est Wt
M4-02.0	2.0	10	36.0	33.0	30.0	33.0	8.0	4.5	26
M4-02.5	2.5	12	40.0	37.0	34.0	37.0	9.0	5.5	40
M4-03.0	3.0	14	46.0	43.0	40.0	43.0	10.0	5.5	61
M4-03.5	3.5	16	50.0	47.0	44.0	47.0	11.0	6.5	83
M4-04.0	4.0	16	51.0	47.0	43.0	47.0	12.0	6.5	90
M4-05.0	5.0	18	62.0	58.0	54.0	58.0	13.0	7.0	120
M4-06.0	6.0	22	69.0	65.0	61.0	65.0	15.0	8.5	175
M4-08.0	8.0	26	82.0	78.0	74.0	78.0	17.0	10.0	304
M4-10.0	10.0	30	102.0	98.0	94.0	98.0	19.0	12.0	484
M4-12.0	12.0	36	112.0	108.0	104.0	108.0	22.0	15.0	659
M4-14.0	14.0	40	120.0	115.0	110.0	115.0	25.0	15.5	930
M4-16.0	16.0	45	126.0	121.0	116.0	121.0	27.5	17.0	1,140
M4-18.0	18.0	50	135.0	130.0	125.0	130.0	30.0	19.5	1,623
M4-20.0	20.0	54	149.0	144.0	139.0	144.0	32.0	21.5	2,055
M4-22.0	22.0	60	157.0	152.0	147.0	152.0	35.0	23.0	2,464
M4-24.0	24.0	64	164.0	159.0	154.0	159.0	37.0	24.5	2,803
M4-26.0	26.0	68	184.0	179.0	174.0	179.0	39.0	25.5	3,282
M4-28.0	28.0	72	205.0	200.0	195.0	200.0	41.0	27.0	3,788
M4-30.0	30.0	78	220.0	215.0	210.0	215.0	44.0	28.5	5,293

- All dimensions are in inches. All weights are in pounds. Weights are approximate.
- Listed sound data is based on typical performance and should not be considered absolute.
- See nomenclature guide for additional information on part number creation.