

Silencer Specification



OVERVIEW

The M5 is engineered for reactive hospital grade noise reduction in heavy industrial areas where machinery operates continuously around a quiet locality. Suitable locations include hospitals, schools and quiet residential districts.

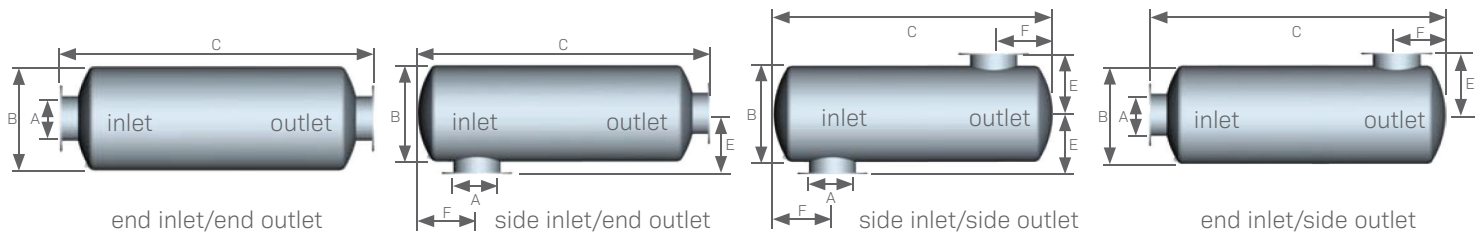
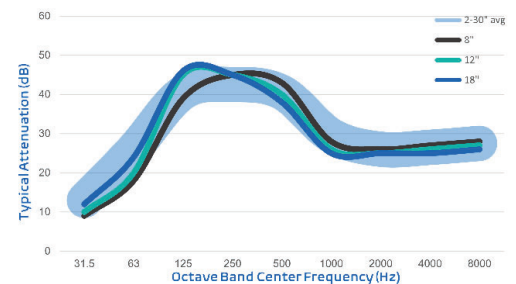
Typical application: Internal combustion engine exhausts in extremely low background noise areas, such as residential or hospital locations away from busy streets.

FEATURES

- Advanced acoustical design
- Heavy duty, all welded construction and long service life
- Easily installed in any position
- High heat silicone black finish
- Connections: Sizes 3.5 and under MNPT, 4 and up ANSI pattern flanged
- Sizes 6 and under are two chambered, 8 and above are three chambers
- Drain connection

OPTIONS / ACCESSORIES

- Explosion relief cover
- Flexible connectors
- Companion flanges
- Cleanout openings
- Custom inlet/outlet size, location and multiple orientations available
- Horizontal or vertical support arrangements
- Aluminized steel, Stainless Steel 304 or 316 construction available
- Special paints and finishes available
- Complete range of exhaust accessories



PRODUCT SPECS

Model-Size	A (size)	B (dia)	End In/End Out C (OAL)	Side In/End Out C (OAL)	Side In/Side Out C (OAL)	End In/Side Out C (OAL)	E	F	Est Wt
M5-02.0	2.0	10	40.0	37.0	34.0	37.0	8.0	4.5	39
M5-02.5	2.5	12	46.0	43.0	40.0	43.0	9.0	5.5	61
M5-03.0	3.0	14	50.0	47.0	44.0	47.0	10.0	6.0	85
M5-03.5	3.5	16	54.0	51.0	48.0	51.0	11.0	7.0	114
M5-04.0	4.0	18	62.0	58.0	54.0	58.0	13.0	7.0	177
M5-05.0	5.0	22	74.0	70.0	66.0	70.0	15.0	9.0	271
M5-06.0	6.0	26	85.0	81.0	77.0	81.0	17.0	11.0	342
M5-08.0	8.0	30	103.0	99.0	95.0	99.0	19.0	12.0	548
M5-10.0	10.0	36	118.0	114.0	110.0	114.0	22.0	14.0	783
M5-12.0	12.0	36	130.0	126.0	122.0	126.0	22.0	14.0	870
M5-14.0	14.0	40	145.0	140.0	135.0	140.0	25.0	17.0	1,242
M5-16.0	16.0	45	156.0	151.0	146.0	151.0	27.5	19.0	1,543
M5-18.0	18.0	50	171.0	166.0	161.0	166.0	30.0	21.0	2,252
M5-20.0	20.0	54	185.0	180.0	175.0	180.0	32.0	22.0	2,818
M5-22.0	22.0	60	199.0	194.0	189.0	194.0	35.0	24.0	3,429
M5-24.0	24.0	64	212.0	207.0	202.0	207.0	37.0	26.0	3,916
M5-26.0	26.0	68	235.0	230.0	225.0	230.0	39.0	27.0	4,576
M5-28.0	28.0	72	268.0	263.0	258.0	263.0	41.0	29.0	5,390
M5-30.0	30.0	78	278.0	273.0	268.0	273.0	44.0	32.0	7,246

- All dimensions are in inches. All weights are in pounds. Weights are approximate.
- Listed sound data is based on typical performance and should not be considered absolute.
- See nomenclature guide for additional information on part number creation.