

Silencer Specification

MAXIM

• SILENCERS •

OVERVIEW

The MSA1 silencer is engineered to provide an industrial grade attenuation with a highly efficient spark arrestor. Designed for use on the exhaust system of internal combustion engines where a fire hazard or dirt nuisance would exist from particles of carbon or ash in the exhaust stream.

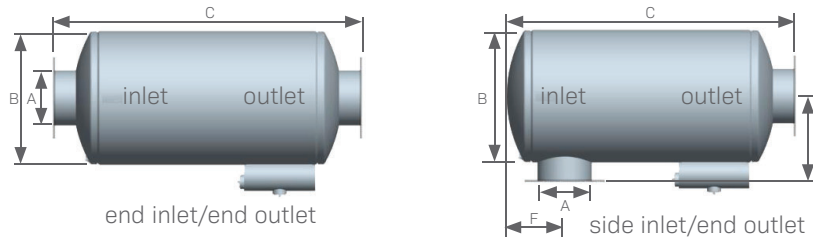
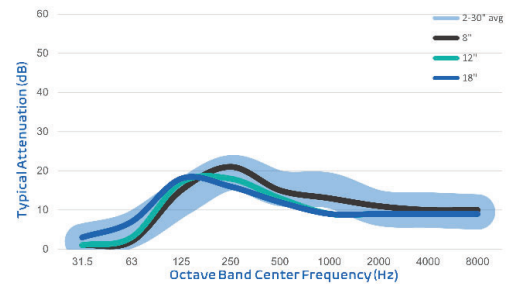
Typical Applications: Internal combustion engine exhausts, marine service, refineries/hazardous environments, and offshore drilling/production platforms

FEATURES

- Advanced acoustical design
- Heavy duty, all welded construction and long service life
- Easily installed in any position
- High heat silicone black finish
- Connections: Sizes 3.5 and under MNPT, 4 and up ANSI pattern flanged
- Two chambers
- Drain connection

OPTIONS / ACCESSORIES

- Explosion relief cover
- Flexible connectors
- Companion flanges
- Cleanout openings
- Custom inlet/outlet size, location and multiple orientations available
- Horizontal or vertical support arrangements
- Aluminized steel, Stainless Steel 304 or 316 construction available
- Special paints and finishes available
- Complete range of exhaust accessories



PRODUCT SPECS

Model-Size	End Inlet/End Outlet			Side Inlet/End Outlet			Est Wt
	A (size)	B (dia)	C (OAL)	C (OAL)	E	F	
MSA1-02.0	2.0	6	20.0	17.0	6.0	3.5	23
MSA1-02.5	2.5	8	20.0	17.0	7.0	4.0	26
MSA1-03.0	3.0	8	24.0	21.0	7.0	4.0	28
MSA1-03.5	3.5	8	26.0	23.0	7.0	4.5	29
MSA1-04.0	4.0	10	30.0	26.0	9.0	5.0	40
MSA1-05.0	5.0	12	34.0	30.0	10.0	6.0	51
MSA1-06.0	6.0	14	41.0	37.0	11.0	6.5	75
MSA1-08.0	8.0	16	48.0	44.0	12.0	8.5	108
MSA1-10.0	10.0	18	50.0	46.0	13.0	9.5	138
MSA1-12.0	12.0	22	60.0	56.0	15.0	11.5	203
MSA1-14.0	14.0	30	70.0	65.0	20.0	13.5	394
MSA1-16.0	16.0	36	80.0	75.0	23.0	16.5	535
MSA1-18.0	18.0	40	90.0	85.0	25.0	17.5	858
MSA1-20.0	20.0	45	96.0	91.0	27.5	20.0	1,032
MSA1-22.0	22.0	50	109.0	104.0	30.0	22.0	1,308
MSA1-24.0	24.0	54	119.0	114.0	32.0	24.0	1,573
MSA1-26.0	26.0	60	125.0	120.0	35.0	26.0	1,936
MSA1-28.0	28.0	64	140.0	135.0	37.0	28.0	2,382
MSA1-30.0	30.0	68	153.0	148.0	39.0	30.0	2,867

- All dimensions are in inches. All weights are in pounds. Weights are approximate.
- Listed sound data is based on typical performance and should not be considered absolute.
- See nomenclature guide for additional information on part number creation.