

Silencer Specification

MAXIM

• SILENCERS •

OVERVIEW

The MSA3 silencer is engineered to provide a critical grade attenuation with a highly efficient spark arrestor. Designed for use on the exhaust system of internal combustion engines where a fire hazard or dirt nuisance would exist from particles of carbon or ash in the exhaust stream.

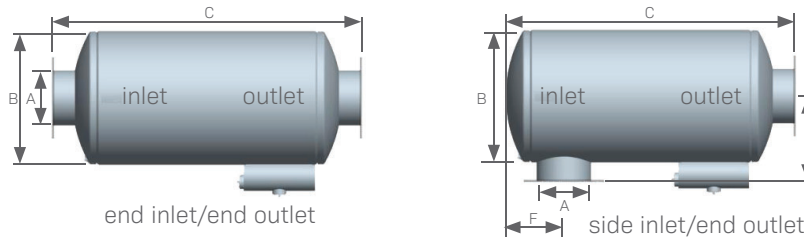
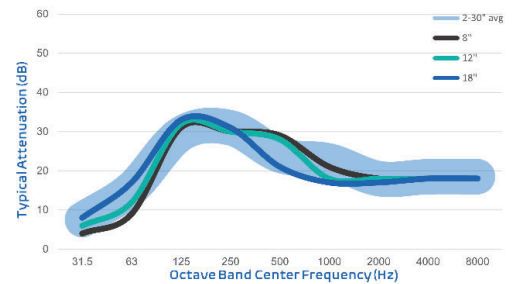
Typical Applications: Internal combustion engine exhausts, marine service, refineries/hazardous environments, and offshore drilling/production platforms

FEATURES

- Advanced acoustical design
- Heavy duty, all welded construction and long service life
- Easily installed in any position
- High heat silicone black finish
- Connections: Sizes 3.5 and under MNPT, 4 and up ANSI pattern flanged
- Two chambers
- Drain connection

OPTIONS / ACCESSORIES

- Explosion relief cover
- Flexible connectors
- Companion flanges
- Cleanout openings
- Custom inlet/outlet size, location and multiple orientations available
- Horizontal or vertical support arrangements
- Aluminized steel, Stainless Steel 304 or 316 construction available
- Special paints and finishes available
- Complete range of exhaust accessories



PRODUCT SPECS

Model-Size	A (size)	B (dia)	End Inlet/End Outlet		Side Inlet/End Outlet		Est Wt
			C (OAL)	C (OAL)	E	F	
MSA3-02.0	2.0	8	34.0	31.0	7.0	4.5	28
MSA3-02.5	2.5	10	34.0	31.0	8.0	5.0	37
MSA3-03.0	3.0	12	38.0	35.0	9.0	5.5	54
MSA3-03.5	3.5	14	42.0	39.0	10.0	6.0	70
MSA3-04.0	4.0	14	48.0	44.0	11.0	6.0	77
MSA3-05.0	5.0	16	57.0	53.0	12.0	7.0	108
MSA3-06.0	6.0	18	63.0	59.0	13.0	8.0	132
MSA3-08.0	8.0	22	74.0	70.0	15.0	9.5	205
MSA3-10.0	10.0	26	87.0	83.0	17.0	11.5	356
MSA3-12.0	12.0	30	102.0	98.0	19.0	13.0	518
MSA3-14.0	14.0	36	109.0	104.0	23.0	15.5	687
MSA3-16.0	16.0	40	119.0	114.0	25.0	16.5	976
MSA3-18.0	18.0	45	127.0	122.0	27.5	18.0	1,169
MSA3-20.0	20.0	50	137.0	132.0	30.0	20.5	1,676
MSA3-22.0	22.0	54	149.0	144.0	32.0	22.5	2,127
MSA3-24.0	24.0	60	162.0	157.0	35.0	24.0	2,627
MSA3-26.0	26.0	64	183.0	178.0	37.0	25.5	3,106
MSA3-28.0	28.0	68	200.0	195.0	39.0	26.5	3,561
MSA3-30.0	30.0	72	216.0	211.0	41.0	28.0	4,140

- All dimensions are in inches. All weights are in pounds. Weights are approximate.
- Listed sound data is based on typical performance and should not be considered absolute.
- See nomenclature guide for additional information on part number creation.