

### Silencer Specification

# MAXIM

• SILENCERS •

### OVERVIEW

The MSA5 silencer is engineered to provide a hospital grade attenuation with a highly efficient spark arrestor. Designed for use on the exhaust system of internal combustion engines where a fire hazard or dirt nuisance would exist from particles of carbon or ash in the exhaust stream.

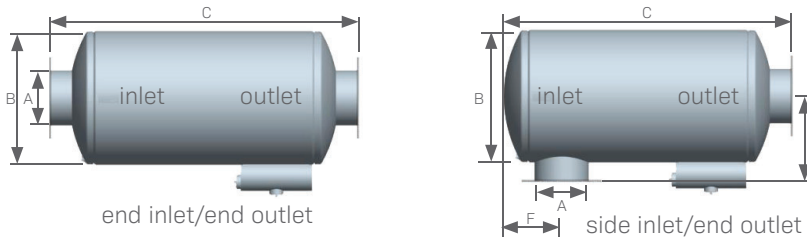
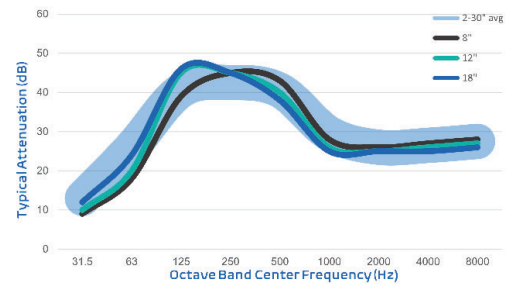
Typical Applications: Internal combustion engine exhausts, marine service, refineries/hazardous environments, and offshore drilling/production platforms

### FEATURES

- Advanced acoustical design
- Heavy duty, all welded construction and long service life
- Easily installed in any position
- High heat silicone black finish
- Connections: Sizes 3.5 and under MNPT, 4 and up ANSI pattern flanged
- Sizes 6 and under are two chambered, 8 and above are three chambers
- Drain connection

### OPTIONS / ACCESSORIES

- Explosion relief cover
- Flexible connectors
- Companion flanges
- Cleanout openings
- Custom inlet/outlet size, location and multiple orientations available
- Horizontal or vertical support arrangements
- Aluminized steel, Stainless Steel 304 or 316 construction available
- Special paints and finishes available
- Complete range of exhaust accessories



### PRODUCT SPECS

Model-Size	End Inlet/End Outlet			Side Inlet/End Outlet			Est Wt
	A (size)	B (dia)	C (OAL)	C (OAL)	E	F	
MSA5-02.0	2.0	10	40.0	370	8.0	4.5	47
MSA5-02.5	2.5	12	46.0	43.0	9.0	5.5	59
MSA5-03.0	3.0	14	50.0	47.0	10.0	6.0	74
MSA5-03.5	3.5	16	54.0	51.0	11.0	7.0	93
MSA5-04.0	4.0	18	62.0	58.0	13.0	7.0	119
MSA5-05.0	5.0	22	74.0	70.0	15.0	9.0	189
MSA5-06.0	6.0	26	85.0	81.0	17.0	11.0	305
MSA5-08.0	8.0	30	103.0	99.0	19.0	12.0	517
MSA5-10.0	10.0	36	118.0	114.0	22.0	14.0	730
MSA5-12.0	12.0	36	130.0	126.0	22.0	14.0	820
MSA5-14.0	14.0	40	145.0	140.0	25.0	17.0	1,188
MSA5-16.0	16.0	45	156.0	151.0	27.5	19.0	1,461
MSA5-18.0	18.0	50	171.0	166.0	30.0	21.0	2,111
MSA5-20.0	20.0	54	185.0	180.0	32.0	22.0	2,664
MSA5-22.0	22.0	60	199.0	194.0	35.0	24.0	3,237
MSA5-24.0	24.0	64	212.0	207.0	37.0	26.0	3,693
MSA5-26.0	26.0	68	235.0	230.0	39.0	27.0	4,313
MSA5-28.0	28.0	72	268.0	263.0	41.0	29.0	5,053
MSA5-30.0	30.0	78	278.0	273.0	44.0	32.0	6,866

- All dimensions are in inches. All weights are in pounds. Weights are approximate.
- Listed sound data is based on typical performance and should not be considered absolute.
- See nomenclature guide for additional information on part number creation.