

Silencer Specification

MAXIM • SILENCERS •

OVERVIEW

The MT1 silencer is engineered to provide average silencing in areas where some background noise is always present and effective, but not complete silencing is needed, and back pressure requirements call for a low pressure drop silencer.

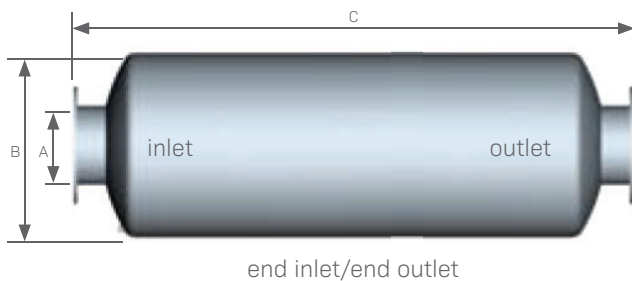
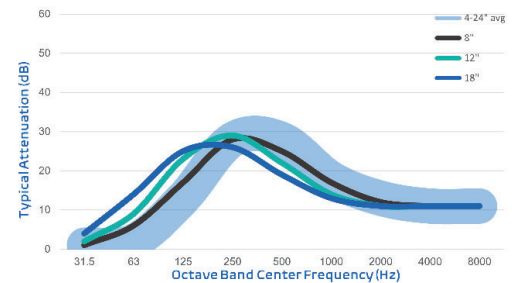
Typical Applications: Internal combustion engine intakes and exhausts, as well as turbo charged reciprocating engines with low allowable back pressure

FEATURES

- Advanced acoustical design
- All welded construction and long service life
- Easily installed in any position
- High heat silicone black finish
- Connections: ANSI pattern flanged
- Two chambers
- Drain connection

OPTIONS / ACCESSORIES

- Explosion relief cover
- Flexible connectors
- Companion flanges
- Cleanout openings
- Custom inlet/outlet size, location and multiple orientations available
- Horizontal or vertical support arrangements
- Aluminized steel, Stainless Steel 304 or 316 construction available
- Special paints and finishes available
- Complete range of exhaust accessories



PRODUCT SPECS

| Model-Size | A (size) | B (dia) | C (OAL) | Est Wt |
|------------|----------|---------|---------|--------|
| MT1-04.0 | 4.0 | 14 | 48.0 | 80 |
| MT1-05.0 | 5.0 | 16 | 57.0 | 109 |
| MT1-06.0 | 6.0 | 18 | 63.0 | 136 |
| MT1-08.0 | 8.0 | 22 | 74.0 | 217 |
| MT1-10.0 | 10.0 | 26 | 87.0 | 377 |
| MT1-12.0 | 12.0 | 30 | 102.0 | 552 |
| MT1-14.0 | 14.0 | 36 | 109.0 | 731 |
| MT1-16.0 | 16.0 | 40 | 119.0 | 1,013 |
| MT1-18.0 | 18.0 | 45 | 127.0 | 1,204 |
| MT1-20.0 | 20.0 | 50 | 137.0 | 1,754 |
| MT1-22.0 | 22.0 | 54 | 149.0 | 2,199 |
| MT1-24.0 | 24.0 | 60 | 162.0 | 2,660 |

- All dimensions are in inches. All weights are in pounds. Weights are approximate.
- Listed sound data is based on typical performance and should not be considered absolute.
- See nomenclature guide for additional information on part number creation.