

Silencer Specification



OVERVIEW

The MT2 silencer is engineered to provide better than average silencing in areas where ambient noise is relatively low, and back pressure requirements call for a low pressure drop silencer.

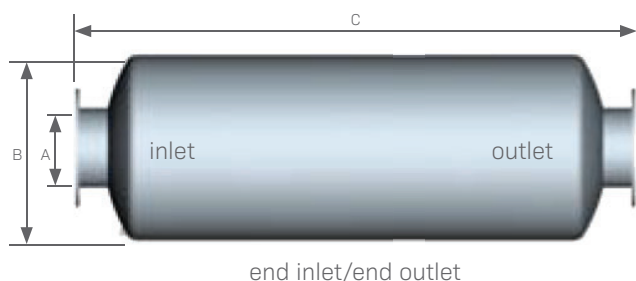
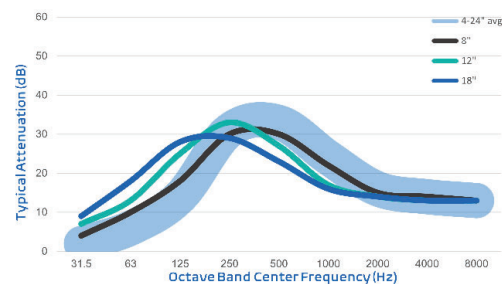
Typical Applications: Internal combustion engine intakes and exhausts, as well as turbo charged reciprocating engines with low allowable back pressure

FEATURES

- Advanced acoustical design
- All welded construction and long service life
- Easily installed in any position
- High heat silicone black finish
- Connections: ANSI pattern flanged
- Two chambers
- Drain connection

OPTIONS / ACCESSORIES

- Explosion relief cover
- Flexible connectors
- Companion flanges
- Cleanout openings
- Custom inlet/outlet size, location and multiple orientations available
- Horizontal or vertical support arrangements
- Aluminized steel, Stainless Steel 304 or 316 construction available
- Special paints and finishes available
- Complete range of exhaust accessories



PRODUCT SPECS

Model-Size	A (size)	B (dia)	C (OAL)	Est Wt
MT2-04.0	4.0	16	51.0	96
MT2-05.0	5.0	18	62.0	129
MT2-06.0	6.0	22	69.0	185
MT2-08.0	8.0	26	82.0	318
MT2-10.0	10.0	30	102.0	509
MT2-12.0	12.0	36	112.0	691
MT2-14.0	14.0	40	120.0	989
MT2-16.0	16.0	45	126.0	1,182
MT2-18.0	18.0	50	135.0	1,663
MT2-20.0	20.0	54	149.0	2,156
MT2-22.0	22.0	60	157.0	2,563
MT2-24.0	24.0	64	164.0	2,911

- All dimensions are in inches. All weights are in pounds. Weights are approximate.
- Listed sound data is based on typical performance and should not be considered absolute.
- See nomenclature guide for additional information on part number creation.