

Silencer Specification

MAXIM

• SILENCERS •

OVERVIEW

The MT3 silencer is engineered to provide silencing in areas where ambient noise is relatively low, and back pressure requirements call for a low pressure drop silencer.

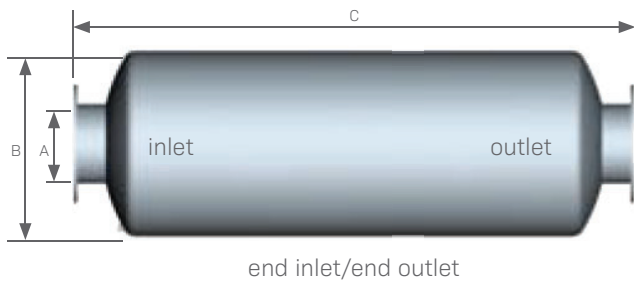
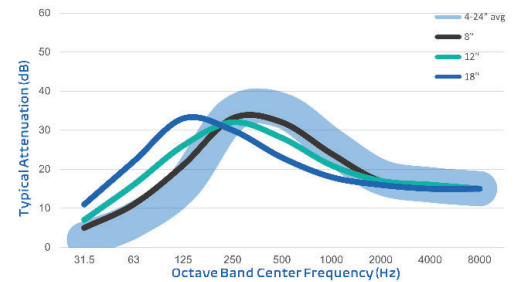
Typical Applications: Internal combustion engine intakes and exhausts, as well as turbo charged reciprocating engines with low allowable back pressure.

FEATURES

- Advanced acoustical design
- All welded construction and long service life
- Easily installed in any position
- High heat silicone black finish
- Connections: ANSI pattern flanged
- Sizes 6 and under are two chambered, 8 and above are three chambers
- Drain connection

OPTIONS / ACCESSORIES

- Explosion relief cover
- Flexible connectors
- Companion flanges
- Cleanout openings
- Custom inlet/outlet size, location and multiple orientations available
- Horizontal or vertical support arrangements
- Aluminized steel, Stainless Steel 304 or 316 construction available
- Special paints and finishes available
- Complete range of exhaust accessories



PRODUCT SPECS

Model-Size	A (size)	B (dia)	C (OAL)	Est Wt
MT3-04.0	4.0	18	62.0	120
MT3-05.0	5.0	22	74.0	188
MT3-06.0	6.0	26	85.0	308
MT3-08.0	8.0	30	103.0	525
MT3-10.0	10.0	36	118.0	755
MT3-12.0	12.0	36	130.0	835
MT3-14.0	14.0	40	145.0	1,235
MT3-16.0	16.0	45	156.0	1,500
MT3-18.0	18.0	50	171.0	2,151
MT3-20.0	20.0	54	185.0	2,777
MT3-22.0	22.0	60	199.0	3,351
MT3-24.0	24.0	64	212.0	3,811

- All dimensions are in inches. All weights are in pounds. Weights are approximate.
- Listed sound data is based on typical performance and should not be considered absolute.
- See nomenclature guide for additional information on part number creation.