

Silencer Specification

MAXIM • SILENCERS •

OVERVIEW

The MT silencer is engineered to provide silencing in areas where background noise is relatively high and moderate silencing is needed, and back pressure requirements call for a low pressure drop silencer.

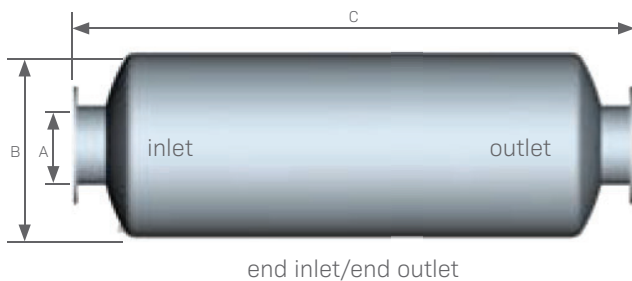
Typical Applications: Internal combustion engine intakes and exhausts, as well as turbo charged reciprocating engines with low allowable back pressure

FEATURES

- Advanced acoustical design
- All welded construction and long service life
- Easily installed in any position
- High heat silicone black finish
- Connections: ANSI pattern flanged
- Two chambers
- Drain connection

OPTIONS / ACCESSORIES

- Explosion relief cover
- Flexible connectors
- Companion flanges
- Cleanout openings
- Custom inlet/outlet size, location and multiple orientations available
- Horizontal or vertical support arrangements
- Aluminized steel, Stainless Steel 304 or 316 construction available
- Special paints and finishes available
- Complete range of exhaust accessories



PRODUCT SPECS

Model-Size	A (size)	B (dia)	C (OAL)	Est Wt
MT-04.0	4.0	14	36.0	64
MT-05.0	5.0	16	43.0	87
MT-06.0	6.0	18	49.0	109
MT-08.0	8.0	22	59.0	181
MT-10.0	10.0	26	64.0	290
MT-12.0	12.0	30	77.0	440
MT-14.0	14.0	36	83.0	593
MT-16.0	16.0	40	90.0	813
MT-18.0	18.0	45	96.0	963
MT-20.0	20.0	50	109.0	1,438
MT-22.0	22.0	54	119.0	1,845
MT-24.0	24.0	60	125.0	2,194

- All dimensions are in inches. All weights are in pounds. Weights are approximate.
- Listed sound data is based on typical performance and should not be considered absolute.
- See nomenclature guide for additional information on part number creation.

Silencer Specification

MAXIM • SILENCERS •

OVERVIEW

The MT1 silencer is engineered to provide average silencing in areas where some background noise is always present and effective, but not complete silencing is needed, and back pressure requirements call for a low pressure drop silencer.

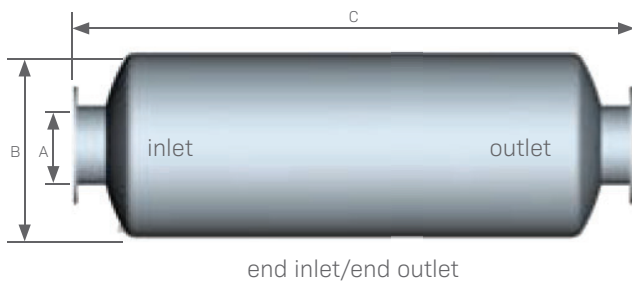
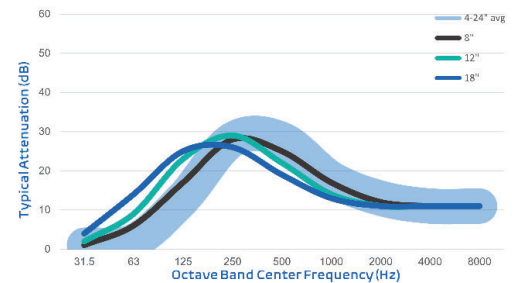
Typical Applications: Internal combustion engine intakes and exhausts, as well as turbo charged reciprocating engines with low allowable back pressure

FEATURES

- Advanced acoustical design
- All welded construction and long service life
- Easily installed in any position
- High heat silicone black finish
- Connections: ANSI pattern flanged
- Two chambers
- Drain connection

OPTIONS / ACCESSORIES

- Explosion relief cover
- Flexible connectors
- Companion flanges
- Cleanout openings
- Custom inlet/outlet size, location and multiple orientations available
- Horizontal or vertical support arrangements
- Aluminized steel, Stainless Steel 304 or 316 construction available
- Special paints and finishes available
- Complete range of exhaust accessories



PRODUCT SPECS

Model-Size	A (size)	B (dia)	C (OAL)	Est Wt
MT1-04.0	4.0	14	48.0	80
MT1-05.0	5.0	16	57.0	109
MT1-06.0	6.0	18	63.0	136
MT1-08.0	8.0	22	74.0	217
MT1-10.0	10.0	26	87.0	377
MT1-12.0	12.0	30	102.0	552
MT1-14.0	14.0	36	109.0	731
MT1-16.0	16.0	40	119.0	1,013
MT1-18.0	18.0	45	127.0	1,204
MT1-20.0	20.0	50	137.0	1,754
MT1-22.0	22.0	54	149.0	2,199
MT1-24.0	24.0	60	162.0	2,660

- All dimensions are in inches. All weights are in pounds. Weights are approximate.
- Listed sound data is based on typical performance and should not be considered absolute.
- See nomenclature guide for additional information on part number creation.

Silencer Specification



OVERVIEW

The MT2 silencer is engineered to provide better than average silencing in areas where ambient noise is relatively low, and back pressure requirements call for a low pressure drop silencer.

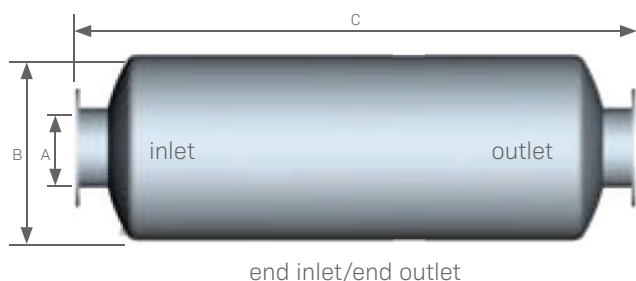
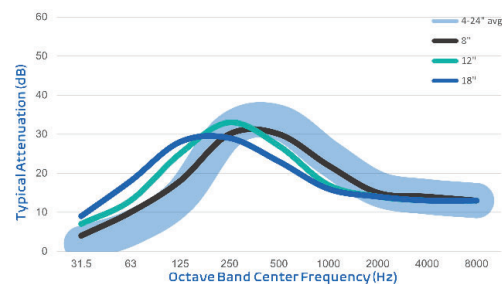
Typical Applications: Internal combustion engine intakes and exhausts, as well as turbo charged reciprocating engines with low allowable back pressure

FEATURES

- Advanced acoustical design
- All welded construction and long service life
- Easily installed in any position
- High heat silicone black finish
- Connections: ANSI pattern flanged
- Two chambers
- Drain connection

OPTIONS / ACCESSORIES

- Explosion relief cover
- Flexible connectors
- Companion flanges
- Cleanout openings
- Custom inlet/outlet size, location and multiple orientations available
- Horizontal or vertical support arrangements
- Aluminized steel, Stainless Steel 304 or 316 construction available
- Special paints and finishes available
- Complete range of exhaust accessories



PRODUCT SPECS

Model-Size	A (size)	B (dia)	C (OAL)	Est Wt
MT2-04.0	4.0	16	51.0	96
MT2-05.0	5.0	18	62.0	129
MT2-06.0	6.0	22	69.0	185
MT2-08.0	8.0	26	82.0	318
MT2-10.0	10.0	30	102.0	509
MT2-12.0	12.0	36	112.0	691
MT2-14.0	14.0	40	120.0	989
MT2-16.0	16.0	45	126.0	1,182
MT2-18.0	18.0	50	135.0	1,663
MT2-20.0	20.0	54	149.0	2,156
MT2-22.0	22.0	60	157.0	2,563
MT2-24.0	24.0	64	164.0	2,911

- All dimensions are in inches. All weights are in pounds. Weights are approximate.
- Listed sound data is based on typical performance and should not be considered absolute.
- See nomenclature guide for additional information on part number creation.

Silencer Specification

MAXIM

• SILENCERS •

OVERVIEW

The MT3 silencer is engineered to provide silencing in areas where ambient noise is relatively low, and back pressure requirements call for a low pressure drop silencer.

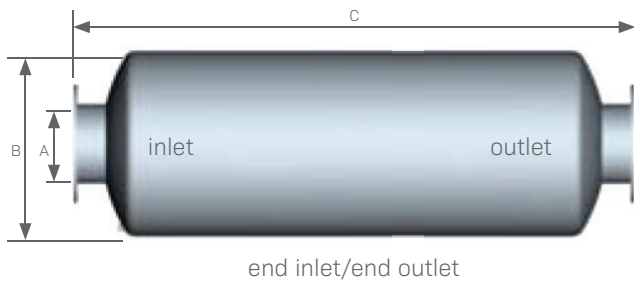
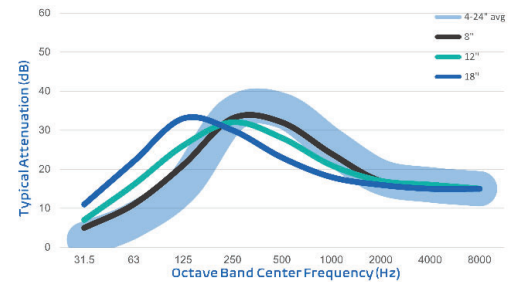
Typical Applications: Internal combustion engine intakes and exhausts, as well as turbo charged reciprocating engines with low allowable back pressure.

FEATURES

- Advanced acoustical design
- All welded construction and long service life
- Easily installed in any position
- High heat silicone black finish
- Connections: ANSI pattern flanged
- Sizes 6 and under are two chambered, 8 and above are three chambers
- Drain connection

OPTIONS / ACCESSORIES

- Explosion relief cover
- Flexible connectors
- Companion flanges
- Cleanout openings
- Custom inlet/outlet size, location and multiple orientations available
- Horizontal or vertical support arrangements
- Aluminized steel, Stainless Steel 304 or 316 construction available
- Special paints and finishes available
- Complete range of exhaust accessories



PRODUCT SPECS

Model-Size	A (size)	B (dia)	C (OAL)	Est Wt
MT3-04.0	4.0	18	62.0	120
MT3-05.0	5.0	22	74.0	188
MT3-06.0	6.0	26	85.0	308
MT3-08.0	8.0	30	103.0	525
MT3-10.0	10.0	36	118.0	755
MT3-12.0	12.0	36	130.0	835
MT3-14.0	14.0	40	145.0	1,235
MT3-16.0	16.0	45	156.0	1,500
MT3-18.0	18.0	50	171.0	2,151
MT3-20.0	20.0	54	185.0	2,777
MT3-22.0	22.0	60	199.0	3,351
MT3-24.0	24.0	64	212.0	3,811

- All dimensions are in inches. All weights are in pounds. Weights are approximate.
- Listed sound data is based on typical performance and should not be considered absolute.
- See nomenclature guide for additional information on part number creation.